

HORN LOUDSPEAKERS

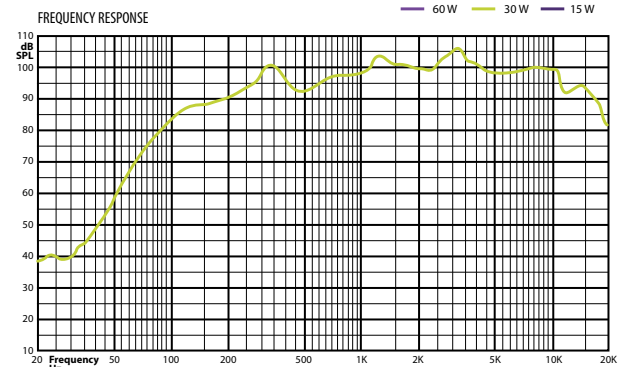
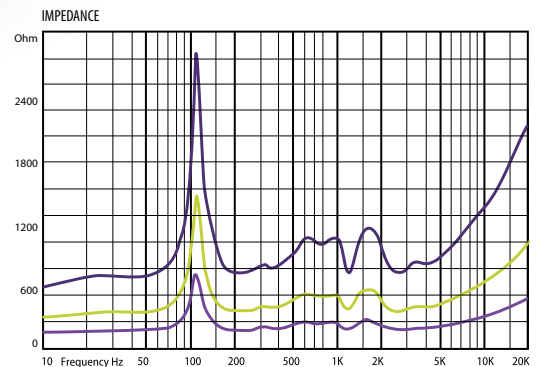
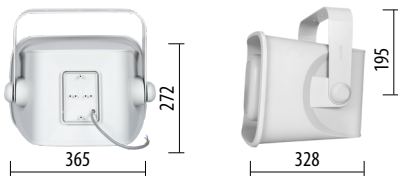
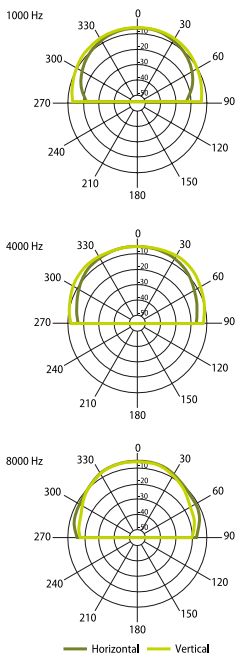
MHQ Two-Way Plastic Horn Loudspeakers

Music horn loudspeaker with wide frequency response and improved protection against water and dust.

MHQ 60HP

Modern design plastic music horn loudspeakers with high SPL and improved frequency response and integrated two-way crossover. IP66 protection rating against water and dust. Quick and easy mounting, phoenix connector inside for easy wiring. Reliable and powerful horn loudspeakers with built-in 100V transformer with power taps. Engineered to provide the highest quality music and speech reproduction, where long throw in large areas are required.

HORIZONTAL / VERTICAL POLAR DIAGRAMS



| Technical Specifications | MHQ 60 HP |
|--------------------------|--|
| Rated power | 60 W |
| Transformer power taps | 60 W – 30 W – 15 W |
| Sensitivity | 98 dB (1 W/1 m) |
| Maximum SPL | 116 dB (Pmax/1m) |
| Frequency response | 120 Hz – 18 kHz |
| Dispersion at 1kHz | 100 ° (H), 120 ° (V) |
| Protection | IP 66 |
| Driver size | 6,5" (165 mm) woofer, 1" (25 mm) tweeter |
| Dimensions | 365 x 328 x 272 mm |
| Weight | 6,4 Kg |
| Material | ABS plastic, U type aluminum bracket |
| Color | Grey (RAL 7035) |